

N.E.W.S. LETTER

The Official Publication of the North East Weak Signal Group – <http://www.newsvhf.com/>

April, 2015

Volume 24

Issue 3

41st EASTERN VHF/UHF CONFERENCE

APRIL 17-19, 2015

BAYMONT INN & SUITES (860)-643-5645

20 TAYLOR ST. (OFF I-84 at exit 63)

MANCHESTER, CT 06042



From the March, 2015 meeting: Steve Simmons, W1SMS during his presentation "Hollow State vs. Solid State." Steve will be one of the speakers at the April Conference giving a presentation called "Lightning Strikes".

DON'T FORGET

**The North East Weak Signal Group
2 Meter VHF and Above Net**

**Every Thursday at 8:30 PM local 144.250 MHz.
W1COT, WZ1V or K1PXE Net Control**

MEMBERSHIP in the N.E.W.S Group is \$15 per year. Apply to Tom Williams, WA1MBA. Email [tomw\(at\)wa1mba.org](mailto:tomw(at)wa1mba.org) You may download an application from our web page:

<http://www.newsvhf.com/>

The N.E.W.S. LETTER is the publication of the North East Weak Signal Group. Articles may be reprinted with proper credit given to the author and the N.E.W.S. LETTER. Send articles to Tom Filecco W1WSO, via email to w1wso.fn31@gmail.com.

N.E.W.S. GROUP OFFICERS

PRESIDENT:

WA2AAU, Dick Frey
7262 Skyline Dr,
Delanson, NY 12053, FN22vs
Home: 518-895-2798
rffbauer@gmail.com
ACTIVE ON: 6, 2, 222, 432, 903, 1296, 2304,
3456, 5760, 10 GHz, 24 GHz.

VICE PRES:

N1JFU, Steve Meuse
80 Walnut St.
West Bridgewater, MA 02379 FN42la
Home: 508-345-3742
smeuse@gmail.com
ACTIVE ON: 6, 2, 222, 432, 10 GHz.

SECRETARY:

W1GHZ, Paul Wade
PO Box 35
Cabot VT 05647, FN34uj
Home: 802-563-2110
Cell: 802-498-4797
w1ghz@arrl.net
ACTIVE ON: 6, 2, 222, 432, 10GHz, more to
come.

TREASURER:

WA1MBA, Tom Williams
POB 28,
Shutesbury, MA 01072, FN32sl
Home: 413-259-1921
tomw@wa1mba.org
ACTIVE ON: 6, 2, 432, 903, 1296, 2304, 3456,
5760, 10, 24, 47 GHz.

EDITOR:

W1WSO/7, Tom Filecco
134 Shady Lane
Pavillion, WY 82523, DN53qe
Cell: 203-364-4225
w1wso.fn31@gmail.com
ACTIVE ON: 6, 2, 10 GHz.

SPECTRUM MGR:

K1MAP, Mark Casey
303 Main Street,
Hampden, MA. 01036, FN3
Home: 413-566-2445
map@mapinternet.com
ACTIVE ON:6, 2, 222, 432, 903, 1296, 2304,
3456, 5760, 10 GHz

BOARD OF DIRECTORS:

(All terms expire 2015)

K1MAP, Mark Casey
303 Main Street
Hampden, MA. 01036, FN32sb
Home: 413-566-2445
map@mapinternet.com
ACTIVE ON: 6, 2, 222, 432, 903, 1296, 2304,
3456, 5760, 10 GHz

K1WHS, Dave Olean
177 Dixon Rd.
Lebanon ME 04027, FN43mj
Home: 207 658 9076
k1whs@metrocast.net
ACTIVE ON: 6, 2, 222, 432, 903, 1296, 2304,
3456, 5760, 10 GHz, 24 GHz.

W1COT, Bob Leiper
47 Diane Dr.
Vernon, CT 06066, FN31st
Home: 860-649-6690
releiper@ix.netcom.com
ACTIVE ON: 6, 2

W1ZC, Dick Wilborg
791 Brookline Rd.
Mason, NH. 03048, FN42dr
Home: 603-878-3680
w1zc@myfairpoint.net
ACTIVE ON: 6, 2, 432, 1296

President's Report: Eastern VHF Conference Is Almost Here

So we are now in early April, and old man winter is trying like crazy to hold on just as long as he can! I still have patches of snow all around the house here in the hills west of Albany, NY. I would guess that our friend, Paul – W1GHZ has a bunch of snow around his place as well. But we have had a few warm days, with more sure to come.

April is also the usual time for the Eastern VHF Conference. The conference committee has been hard at work putting together this year's gala affair. It's looking good so I hope you will come to the conference even if it is a last minute decision. I think the conference hotel is fully booked at this time, but there are still many other hotels and motels nearby that can accommodate you. So no excuses, please come.

This year the conference will have a Workshop Session from 2:30 - 5:00+? PM on Friday afternoon. Two workshops are scheduled: "Making the VHF and up Contest Changes Work To Our Activity Advantage, a round table hosted by K3TUF and "Antenna Modeling" which I will be hosting. With regard to K3TUF's round table discussion, Phil has been a very active participant in VHF contests for the last many years and will lead what will certainly be a spirited discussion. It would be to our serious advantage to take advantage of rules changes to increase activity on the VHF bands here in the North East. Scores and activity has been declining in this part of the country for several years now. Let's see if we can improve the situation. Please come and participate.

Antenna Modeling Workshop

My plan for the antenna modeling workshop is to invite anyone who has an interest in antenna modeling to come with models they have worked on to discuss what they have learned with the group. If you have some favorite software, BRING IT as well, if it fits on your laptop. (I'm sure we could even accommodate you if you want to bring your desktop machine with a better processor and a bigger screen.) The workshop would be great for anyone who is new to the topic to see how the modeling process works from start to finish. I have worked most with a program named NEC

Win Professional (that is no longer sold) and plan to show the results of modeling a 6-foot dish on 903 and 1296 MHz using a Green's Functions file to describe the dish surface in models with different feeds out front. I also own Roy Lewallen, (W7EL)'s EZNEC+ v.5.0, but have only used it occasionally over the years for some simple problems.

So bring your models, bring your results, and bring your programs on computers (if you can). Bring your questions, bring your answers, and let's get together and see what we can learn from each other. This workshop will only be successful if we get a bunch of guys ready to talk about what they have done and what they have learned. Please come.

Secretary's Report

NEWS Meeting 21 March 2015

at Storrs Library, Longmeadow, MA

Called to Order by President, WA2AAU, at 1314

NO TREASURERS REPORT - Treasurer not present

OLD BUSINESS

Eastern VHF Conference -

- Speakers lined up

- Registrations doing well

- Workshops - Antenna modeling, new contest rules

NEW BUSINESS

K1WHS suggestion for VHF Fun contest - positive consensus to discuss at Conference

Committee to suggest rules: K1WHS, WA2AAU, N1JFU

ANNOUNCEMENTS

Eastern Super VHF Conference April 14-17 2016

PRESENTATIONS

W1GHZ - showed some new small test equipment

W1SMS - Hollow State vs Solid State

Adjourned 1507

Treasurer's Report

The Treasury and Membership remains strong. I'm looking forward to a great conference, a bit of warmth, and to see all this snow melt away. Don't forget that I expect to hand over the job of treasurer in July, so please think about whether you or someone you know will be our next treasurer.

-Tom WA1MBA

2015 Calendar

April 17-19 - [Eastern VHF-UHF Conference](#)

April 21, 1900-2300 Local - [222 MHz Spring Sprint](#)

April 22 - Lyrids meteor shower

April 25-26 - [Southeastern VHF Society Conference](#)

April 29, 1900-2300 Local - [432 MHz Spring Sprint](#)

May 1-2 - [New England Amateur Radio Festival - Deerfield, NH](#)

May 2, 0800-1300 Local - [Microwave Spring Sprint](#)

May 9-10, 2300-0300Z - [50 MHz Spring Sprint](#)

May 15-17 - [Dayton Hamfest](#)

June 13-15, 1800Z-0300Z - [ARRL June VHF QSO Party](#)

July 11, 11AM - 4PM - [N.E.W.S. Group Picnic](#)

July 18-19, 1800Z - 2100Z - [CQ Worldwide VHF Contest](#)

August 1-2, 1800Z - 1800Z - [ARRL UHF Contest](#)

August 12-13 - Perseids meteor shower

August 15-16, 6AM - 11:59:59PM - [ARRL 10-GHz & up Cumulative Contest](#)

September 5 (tentative), 1PM - 4PM - [N.E.W.S. Group Meeting](#)

September 12-14, 1800Z-0300Z - [ARRL September VHF QSO Party](#)

September 19-20, 6AM - 11:59:59PM - [ARRL 10-GHz & up Cumulative Contest](#)

September 21, 1900-2300 Local - [144 MHz Fall Sprint](#)

September 29, 1900-2300 Local - [222 MHz Fall Sprint](#)

October 2-4 - [Mid-Atlantic States VHF Conference](#)

October 7, 1900-2300 Local - [432 MHz Fall Sprint](#)

October 9-10 - [New England Amateur Radio Festival - Deerfield, NH](#)

October 11, 8AM-2PM - [Nutmeg Hamfest & ARRL CT State Convention](#)

October 17, 0600-1300 Local - [Microwave Fall Sprint](#)

November 21, 1PM - 4PM - [N.E.W.S. Group Meeting](#)

41st ANNUAL EASTERN VHF/UHF/MICROWAVE CONFERENCE

4/17/15 FRIDAY LODGING

2:30pm - 5:00PM - Workshop Session

6:00pm 'til - SUPER HOSPITALITY ROOM (Food & Refreshments) & Indoor SWAP/SELL & VENDORS (You may want to re-think going out to eat on Fri. Nite!)

4/18/15 SATURDAY REGISTRATION, TALKS, AUCTIONS, TEST LAB, VENDORS & MORE.

7:30am REGISTRATION BEGINS

8:15 am OPENING ANNOUNCEMENTS

8:30am TALKS BEGIN (see SCHEDULE below):

10:00am AUCTION/BREAK

10:25am TALKS RESUME

12:00pm LUNCH (Pizza & Grinders included with Registration)

1:15pm TALKS RESUME

1:00 - 5pm Test Lab to 50 GHz: Greg Bonaguide of Rohde & Schwarz.

3:05pm BREAK

3:15pm TALKS RESUME

4:15pm AUCTION

4:20pm TALKS RESUME

5:20pm NEWS MEETING - WA2AAU

5:30pm Pre-Banquet Hospitality Room

7:00pm BANQUET BUFFET(7 PM - 8:30 PM)

8:20pm Tom Kirby Award Presentation

8:30pm VHF - MICROWAVE TRIVIA QUIZ, Dale Clement AF1T

9:00pm DOOR PRIZE EXTRAVAGANZA, Michele Clement W1MKY and Kevin Gilot NZ1I

PRESENTATIONS SCHEDULE:

Friday, April 17, 2015

PM

2:30-5+ WORKSHOP SESSION

Antenna Modeling – Led by Dick Frey, WA2AAU

2:30-5+ ROUNDTABLE SESSION

Taking advantage of new contest rules to increase participation – Led by Phil Theis, K3TUF

Saturday, April 18, 2015

AM

8:15 WELCOME!

Paul Wade, W1GHZ

8:30 W1SMS, Steve Simons

Lightning Strikes!

9:15 W3SZ, Roger Rehr

OpenHPSDR Applied to VHF/UHF/Microwave Operations
AND The Great 2015 Crash of the Internet Aircraft Servers

10:25 K3TUF, Phil Theis

A Radio Server for VHF+ Contesting and Weak Signal Work

11:00 VE3CZO, Wayne Getchell

Low-Cost Panadapter Interface

11:30 VE2XX, Stuart Truba

Anan SDR Transverter Interface

PM

1:00 N6NB, Wayne Overbeck

Working Hawaii on VHF, 1957-2014

2:00 N1JEZ, Mike Seguin

Experiments on 241 GHz

2:30 W1GHZ, Paul Wade

6-Meter Filter with Harmonic Suppression

3:05 VE2DFO, Don Falle

The Evolution of 1296 Power Amplifiers

3:25 KI2L, Bob Bownes

Experiences building the W6PQL 220 and 1.2GHz SSPAs

3:55 N1ZN, Jim Savage

Dish Antennas - How They are Made

4:15 N6NB, , Wayne Overbeck

VHF Adventures Coast to Coast, a 58-year odyssey

5:00 K3TUF, Phil Theis

VHF+ Contesting; it's a whole new ballgame

There will also be over a dozen additional papers on the Proceedings CD

2015 CSVHF Conference Denver, CO

Thursday July 23 thru Sunday July 26, 2015

Denver Marriott Westminster
7000 Church Ranch Boulevard
Westminster, Colorado

Early Bird Registration is online at <http://2015.csvhfs.org/>

Nestled in the foothills of the Rocky Mountains, this fine venue offers many amenities within a short distance. There will be ample time to meet and greet your old friends and to make new ones.

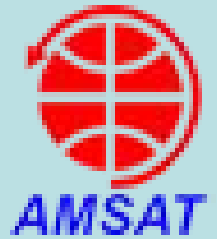
Our local host this year is Rocky Mountain Ham Radio. The conference will feature the traditional activities, Banquet, Luncheons and hospitality suites, technical programs, noise figure measurement, antenna range, Rover vehicle show and tell. We have a wide variety of activities available along the Front Range of Colorado and will be offering a choice of side trips designed to entertain the entire family. Operating opportunities under consideration include microwave operating from local mountain tops and the chance to score a microwave VUCC in a weekend! A Sunday VHF 102 introduction geared to newcomers to weak signal operation on the VHF+ bands will be promoted locally and designed to encourage younger hams to get involved in DX'ing and contesting.

Rooms will be \$109 per night and this rate will be available 3 days prior to and three days after the conference for those wishing to take advantage of this opportunity to explore the many wonders the Colorado Front Range has to offer. This link will take you to the hotel's advance registration page for the Conference. Please use the host hotel as it makes it possible for us to bring the conference to you at the cost we've negotiated.

At this time we would like to encourage any and all amateurs interested in presenting papers and programs on subjects that would be of interest to the CSVHFS conference weak signal attendees to contact our Program Chairman John Maxwell W0VG at w0vg@arrl.net



Conference Supporters



Conference Supporters



DX Publishing, Inc.



Conference Supporters

The logo for QRPme, featuring the text "QRPme" in a white, stylized font on a blue rectangular background. The logo is centered within a white horizontal bar that has a series of black dots and dashes on either side, resembling a Morse code signal.

QRPme PO Box 160 Limerick, Maine 04048 <http://www.qrpme.com/?p=contact>



Directive Systems.

Clifford Wareham N5CEY
"Easy Dig"



Test Lab Greg Bonaguide, WA1VUG

The logo for ROHDE & SCHWARZ. It features the letters "RS" in a blue square icon. To the right, the text "ROHDE & SCHWARZ" is written in a bold, blue, sans-serif font.

Mickie
W1MKY

Paul
W1GHZ

Dick
WA2AAU

Don
W1FKF

If we missed any Supporters Contact
Mark K1MAP

Above Company Trademarks

We Have Everything for Your Station!



We will beat the competitor's prices!

Call us for details.

Call: 800-777-0703 to order a Spring/Summer catalogue".



W2PED

Specializing in 24 GHz.
and above.

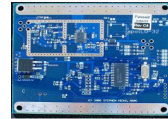
pdrexler@hotmail.com

| | | | | | |
|---|---------------------------|---|---------------------|-------------------------------|----------------------------|
| Home | Products | Support | Buy | Contact Us | |
| West Mountain Radio 1020 Spring City Drive Waukesha, WI 53186 Phone: 1-262-522-6503 Fax: 262-522-6504 Email: info@westmountainradio.com | | Products for DC Power, Amateur Radio and R/C Hobbies <ul style="list-style-type: none">Robustness and reliability required by public safety agencies and emergency response teamsPrecision battery analysis suitable for battery pack manufacturers, facilities managers and aircraft ownersLow pricing attractive to amateur radio and R/C hobbyists. http://www.westmountainradio.com/index.php | | | |
| RIGblasters | Radio Products | RIGrunners | DC Power | DSP Filtered Sound | Battery Testers |

| | |
|---|--|
| John Seney Senior Sales Engineer WD1V fn42 http://www.teledynelecroy.com john.seney@lecroy.com 617 686-9882 65 GHz Real-Time Serving ME NH & NE MA | |
| TELEDYNE LECROY Everywhere you look™ | |



DOWN EAST MICR WAVE



LIVE OAK, FLORIDA

VHF/UHF/SHF EQUIPMENT AND PARTS 50 to 10,368 MHz

| | |
|-------------------------------------|-----------------------------|
| Microwave Loop Yagis, VHF/UHF Yagis | No-Tune Linear Transverters |
| Linear Power Amps | Low Noise Preamps |
| Coax Relays | Coax Cable Connectors |
| Chip Components | MMIC's, Transistors |
| RF Modules | Crystals |

Steve Kostro, N2CEI 19519 78th Ter. Live Oak, FL 32060 Tel. 386-364-5529

<http://www.downeastmicrowave.com>



<http://www.flexradio.com/>



VHF & UHF amplifiers
for demanding modes
50 - 144 - 222 - 432 MHz
EME - Digital - Contesting



www.lunarlink.com

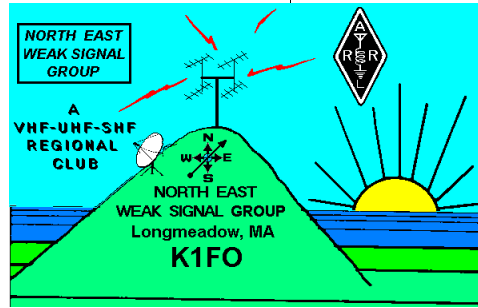
W1QJ - W1SMS info@lunarlink.com
33 Ball Pond Road Danbury, CT 06811



SSB Electronic USA
manufactures and distributes
HF, VHF, UHF and SHF
equipment covering 10 MHz to
47 GHz

124 Cherrywood Drive,
Mountaintop, PA 18707 USA
Phone 570-868-5643 FAX
570-868-6917

[http://www.ssbusa.com/
ham.html](http://www.ssbusa.com/ham.html)



Name: _____

Call sign: _____ Grid: _____

Street: _____

City: _____ State: _____ Zip: _____

Phone (home) _____ Optional (work) _____

Email _____

ARRL member? Y N Electronic Newsletter Delivery? Y N

Operational Bands (circle) 50 MHz 144 MHz 222 MHz 432 MHz 903 MHz
1.2 GHz 2.3 GHz 3.4 GHz 5.6 GHz 10 GHz 24 GHz 47 GHz

76 GHz Light Other (list)

The North East Weak Signal [N.E.W.S.]Group is being established to form a camaraderie among fellow VHF-UHF-SHF enthusiasts, and support a convenient means to exchange technical information. We currently have 6 meetings per year, held at a centrally located facility, and provide a "NEWSLETTER" that is distributed 2 weeks prior to each meeting. Any contributions to this publication are appreciated and can be sent to: Tom Filecco, W1WSO via email – w1wso@comcast.net. Dues are \$15/year. Remember, this group is formed by VHF'ers for VHF'ers.

Mail to:

North East Weak Signal Group
c/o WA1MBA Tom Williams PO Box 28
Shutesbury, MA 01072

North East Weak Signal Group

c/o WA1MBA Tom Williams, PO Box 28, Shutesbury, MA 01072

Check your membership
expiration date on your mailing label!