

How to Modify E-Bay Amplifier for 432 SSB


400 Watts PEP

Don W1FKF

Donw1fkf-news@yahoo.com

Back to home page | Listed in category: Business & Industrial > Electrical & Test Equipment > Electronic Components > Semiconductors & Actives > Transistors

You have purchased more than one of these items. | [View purchase history](#)



offering a very linear power amplifier pallet with original Freescale MRF6VP3450

Condition: **New**

Quantity: 5 available
47 sold / [See feedback](#)

Price: **US \$89.00** [Buy another](#)
Added to your cart

Best Offer: [Make Offer](#)
[Add to watch list](#)
[Add to collection](#)

100% buyer satisfaction 47 sold More than 89% sold

Shipping: **\$8.00** Economy Shipping from China/Hong Kong/Taiwan to worldwide | [See details](#)
See details about international shipping here.
Item location: 深圳, 广东省, China
Ships to: Worldwide [See exceptions](#)

Delivery: Estimated between **Wed. Apr. 18** and **Tue. May. 22**
Please note the delivery estimate is greater than 13 business days.

Payments: **PayPal**
Credit Cards processed by PayPal

PayPal CREDIT
Get more time to pay. [Apply Now](#) | [See terms](#)
[See details](#)

Returns: 14 day returns. Buyer pays for return shipping | [See details](#)

Guarantee: **ebay** MONEY BACK GUARANTEE | [See details](#)
Get the item you ordered or get your money back.
Covers your purchase price and original shipping.

[Seller information](#)
xihu888 (150)
98.6% Positive feedback

[Save this Seller](#)
[Contact seller](#)
Visit store: **xihu888**
[See other items](#)

[Sell now](#)

Price \$89.00 Plus \$8.00 Shipping

“Warning”

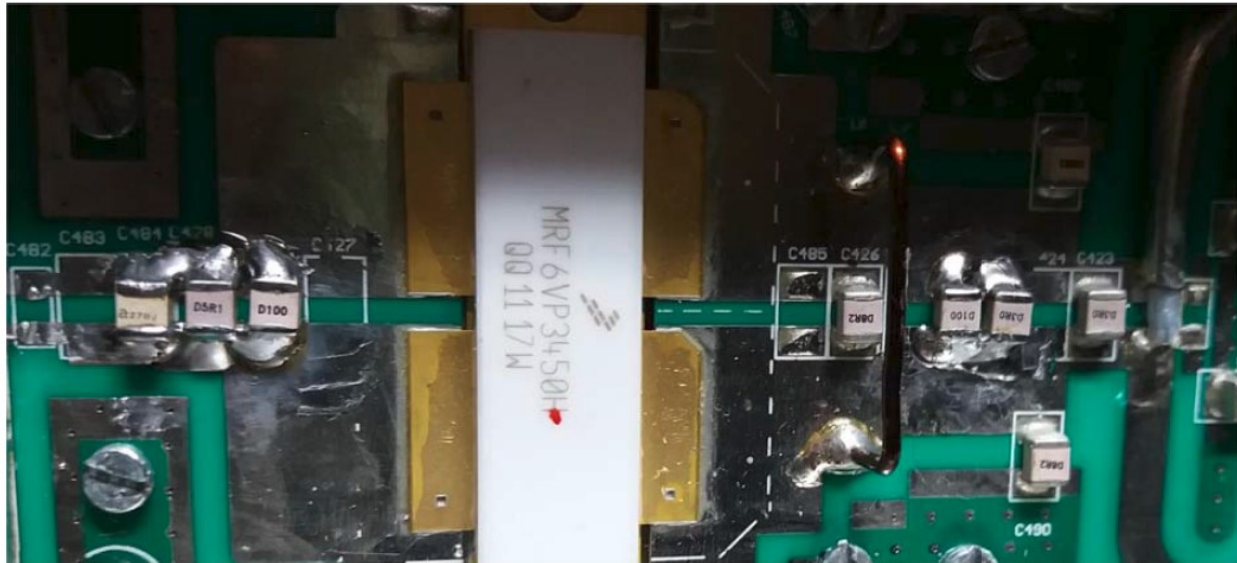
First one I blew the device due to overdrive!

Drive Level needed less than 3 watts

Use Large Heat sink and Fans for cooling

Modified per Instructions

Modified 2nd pallet by Geert, ON5AAS.



Input Circuit:

C484: 27p
C428: 5p1
On position R438: 10p
C427: removed

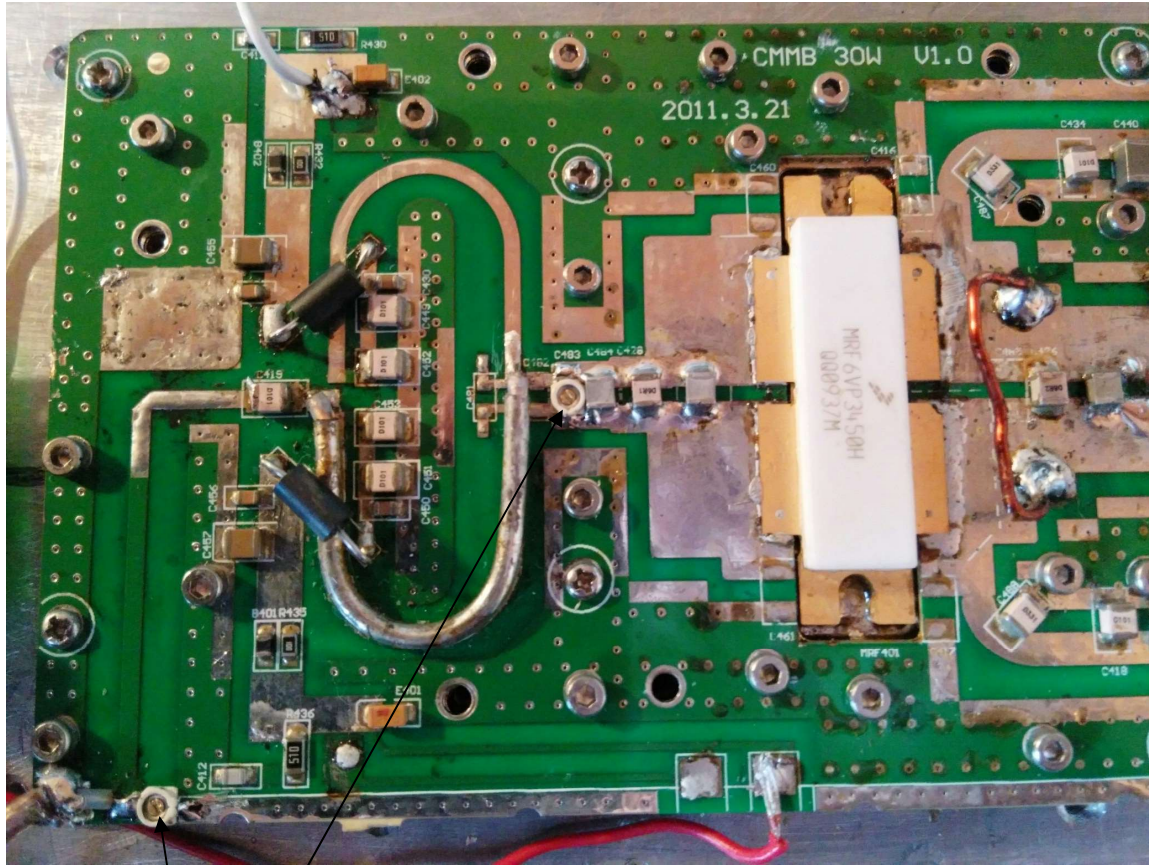
Geert has measured an
input VSWR from 3.72

Output Circuit:

C485: no cap
C426: 8p2
C425: no cap
C424: no cap
C423: 3p0
C490: 8p2
C489: 8p2
Between C425 and C424:
10p and 3p0

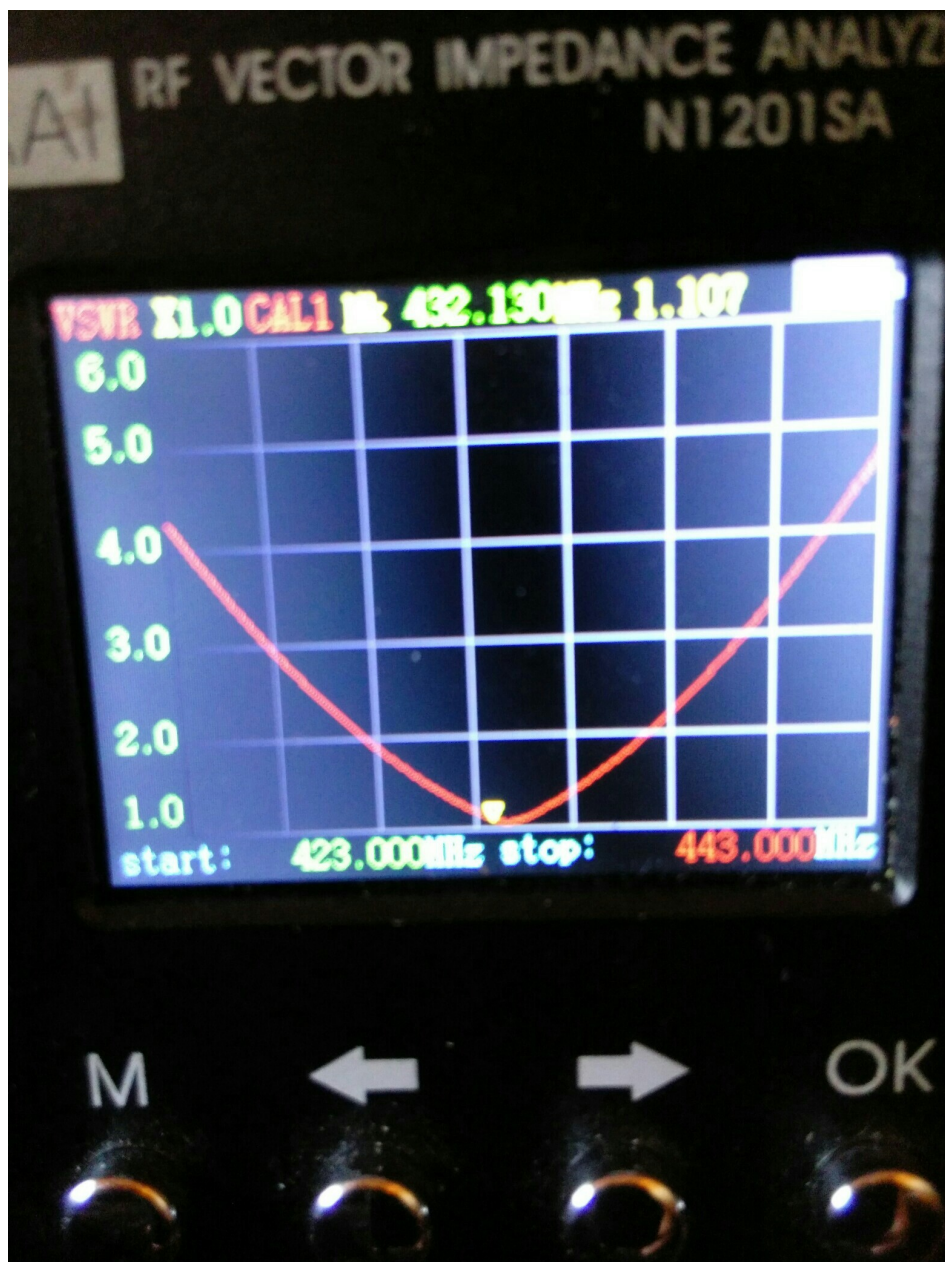
Instructions:

<https://www.hamforum.nl/viewtopic.php?f=32&t=2037&sid=e8a25faecba0d468280b7c0c73fd3731#p7923>



Added 2 5-30 pf (JR300) Adjustable Capacitor

SWR before adding capacitors >3:1



SWR now 1.107
Gain increased to 27 dB
432 MHz 400 Watts
50 Volts 17 Amps

“High pass filter recommended on output”