

6 METER BEACON PROJECT

Presents

8R1DB / 8R1TO Expedition 2009

WHY 8R?

- ▣ Europe top 3 doable entities want list
- ▣ Rare to Northern Europe and Middle East
- ▣ Not done since 2000
- ▣ Rare to W6, W7 & VE7
- ▣ Almost 0 activity
- ▣ Fairly large need in much of the US & VE

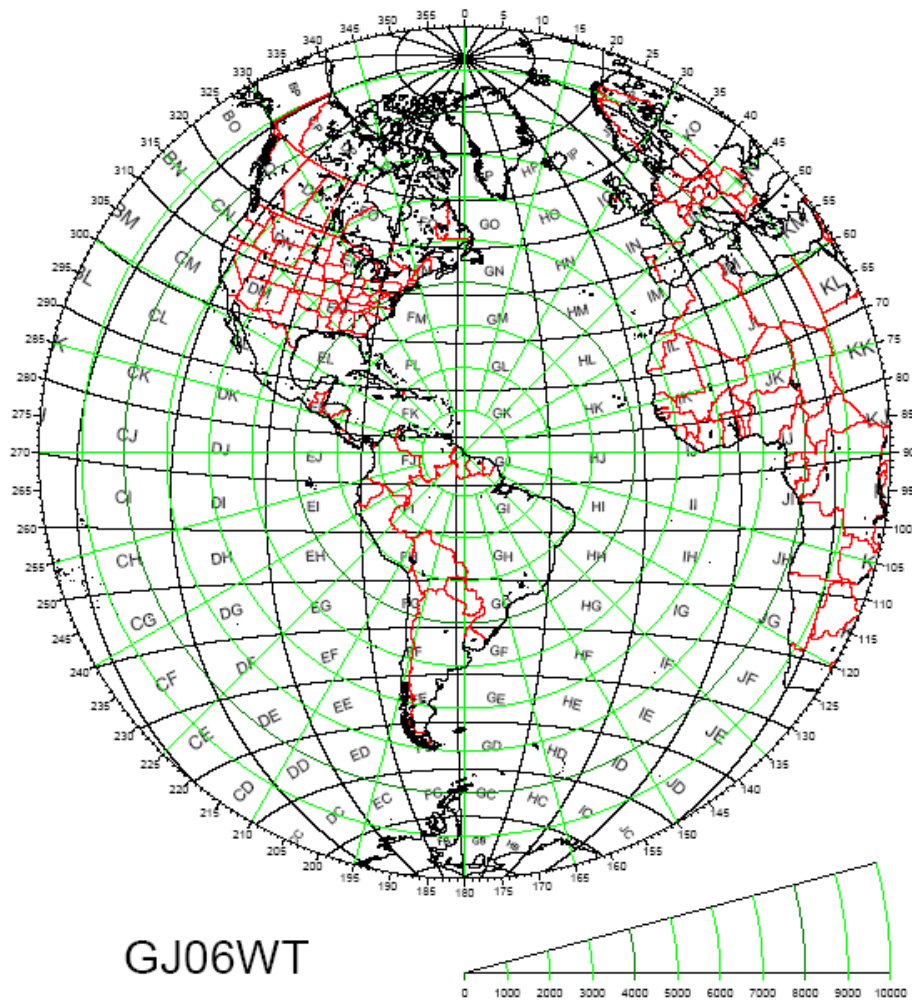
THE PLAN- Step It Up A Notch

- ▣ Largest possible yagi as high as possible
- ▣ Ocean QTH
- ▣ Power (750 watts minimum)
- ▣ Superior feed line
- ▣ Longer Expedition than Normal
- ▣ Work Split (sorry Chris)
- ▣ Quality over quantity

8R1WD- our indispensable host



Guyana



GJ06WT

10000 km

Map of Guyana



Cheddi Jagan Int'l Airport



Ocean View Hotel QTH



Sea Wall



View of Ocean From Room



8R1RPN's Spare Tower



Looked Like a Good Solution

...WELL, UNTIL WE SAW IT IN PERSON



Pre-trip Plans

- ▣ Redundancy (2 or more of everything)
- ▣ Backup plans for most contingencies
- ▣ Coordination with 8R1WD, without whom the trip would NOT have been possible.
- ▣ Shipping some items down in advance

Arrival & Setup

It took 2 days to get station on the air



... If we had done this my way with that heavy reserve-mast I carried down here we'd have been on the air 2 days ago!!!





Yagi Construction



No OSHA in Guyana

All ropes, ladders & manpower







6M7JHV Almost Ready To Go Up







The crew wanted to pivot the ladder between the thrust bearing and the mast to prevent slippage. N3DB tied it off instead so the mast wouldn't bend. They failed to completely untie the ladder before the next lift- it got a free ride.







If that isn't enough, after six AB-577 guys, 6 rope guys and a number of homebrew guy stakes these guys **CLIMBED THE TOWER** after we secured it!







8R1DB ON THE AIR!



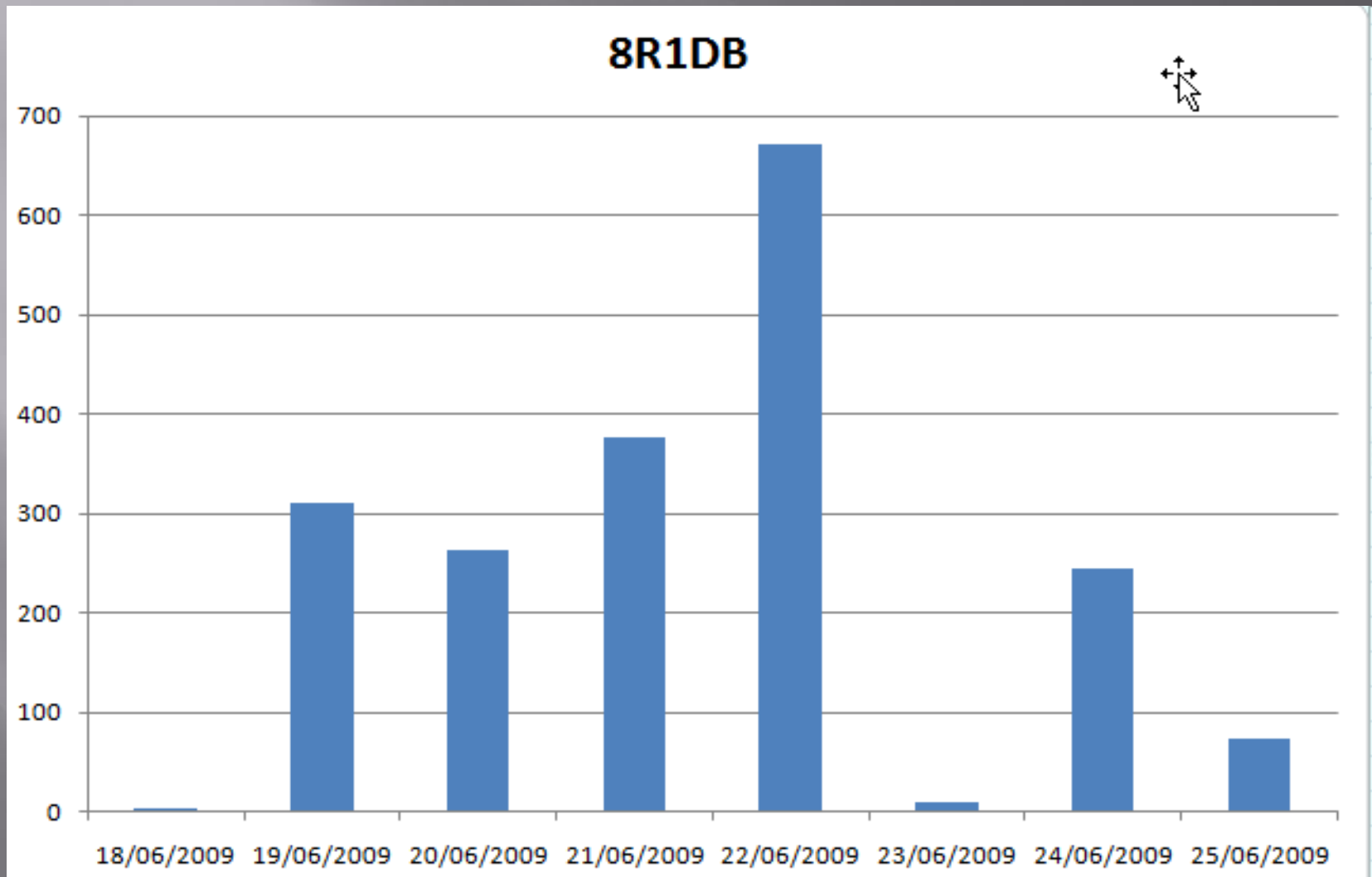
Amp

- ▣ SB200 Converted to a single 3CPX800A7
- ▣ Spare tube
- ▣ New high voltage transformer
- ▣ No protective circuitry
- ▣ Light (carry-on capable)
- ▣ 120VAC or 220VAC capable
- ▣ Filament voltage winding on transformer
- ▣ No variable primary taps (a mistake)

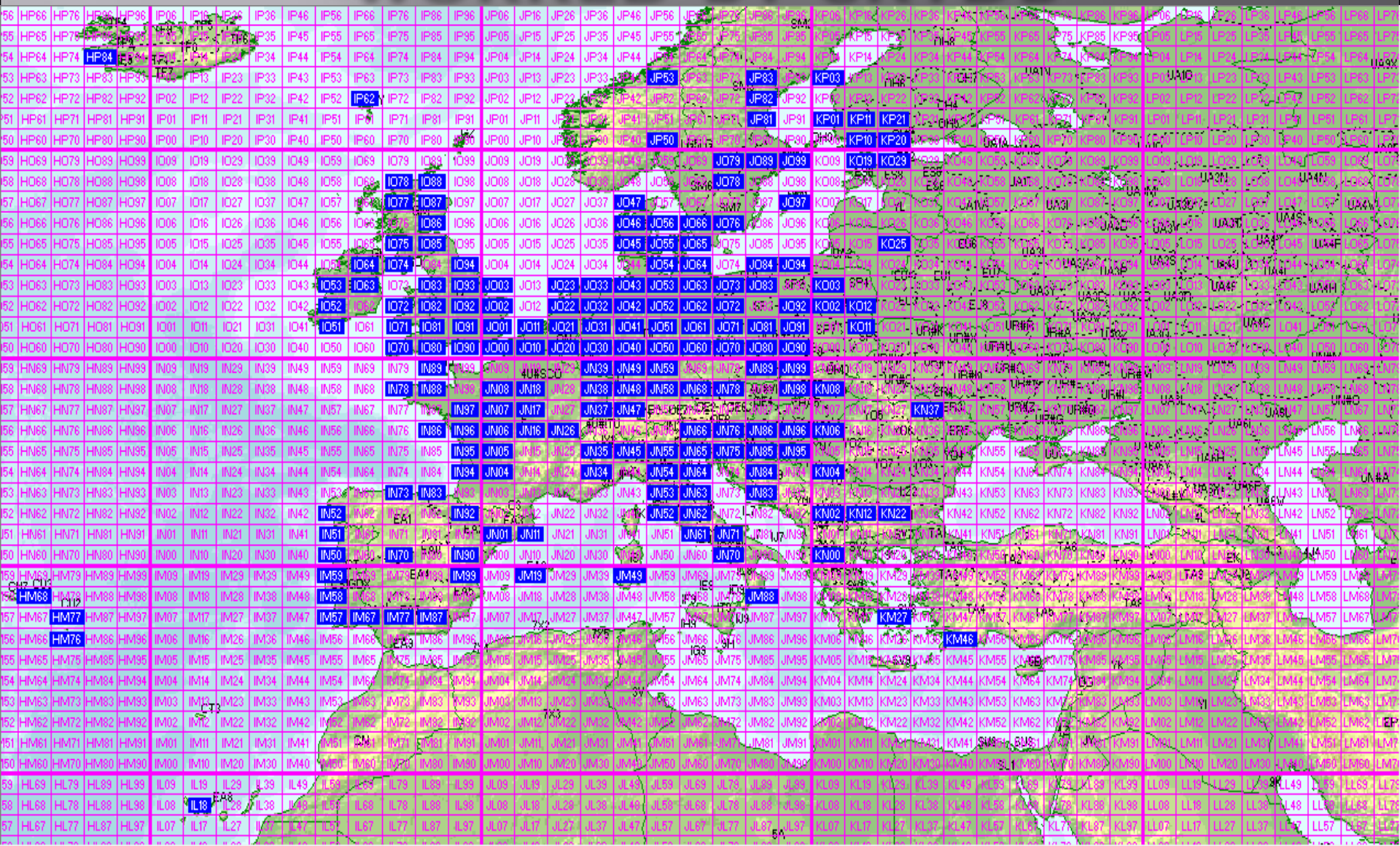
BAD NEWS (LESSONS For N3DB)

- ▣ Open amp before power-on NO MATTER HOW CAREFUL YOU WERE!!!!!!!!!!!!!!!!!!!!!!
- ▣ Primary voltage in non-resort, 3rd world countries is likely to be WELL below 220V.
- ▣ Antenna shipping, or as carry-on, is beaucoup \$\$\$\$\$\$\$\$\$\$
- ▣ Finances and import taxes restrict the “ideal” setup (no AB-577).

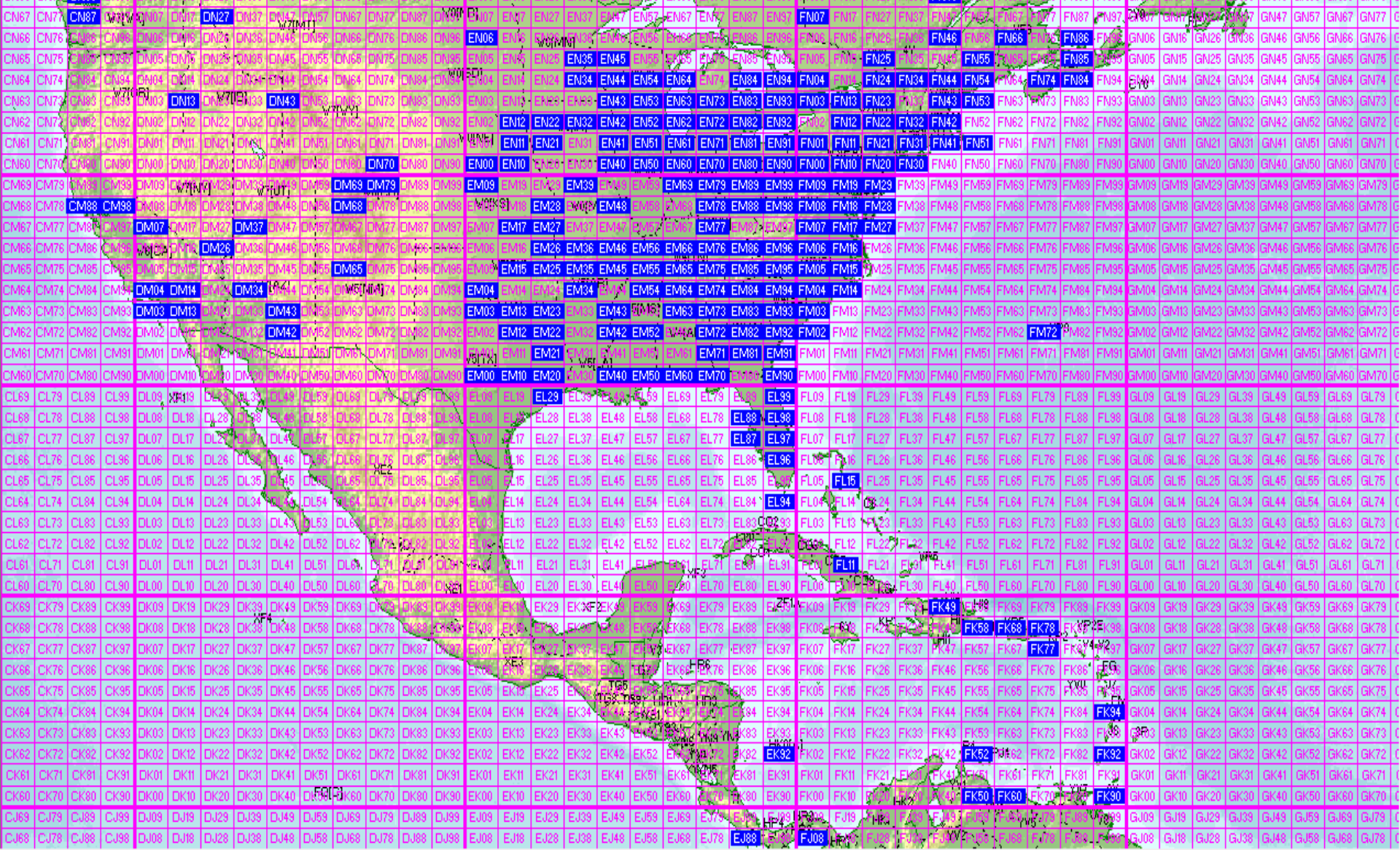
RESULTS of 8R1DB phase

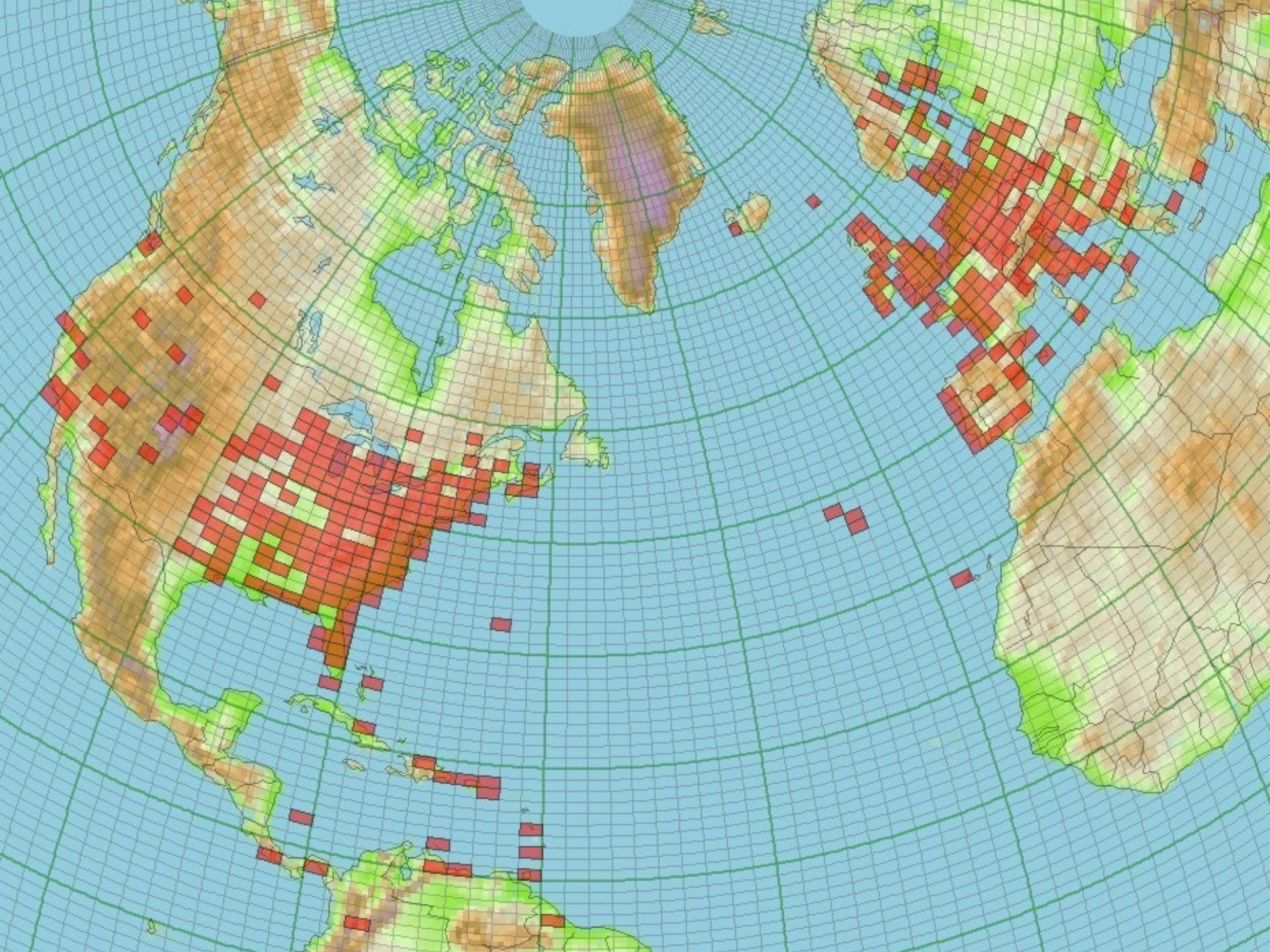


EUROPEAN AND AFRICAN GRIDS WORKED BY 8R1DB



NORTH and SOUTH AMERICAN GRIDS WORKED BY 8R1DB





Worked Entities (8R1DB & 8R1TO)

8R	PA	I	VE	E7	P4	TI
KP4	GM	OK	FM	YU	C6A	HP
W	GI	F	OE	HI	9Y	TF
J3	EI	OM	YV	OH	LX	V2
ON	SP	9A	HB9	EL (slim?)		SV
G	HA	UT	OY	ES	EA6	XE
OZ	EA	GU	LA	OH0	SV5	FG
GW	CT	GD	IS0	VP9	HK	
DL	CU	LY	LZ	CO	5J0	
SM	S5	PJ2	Z3	ZF	EA8	

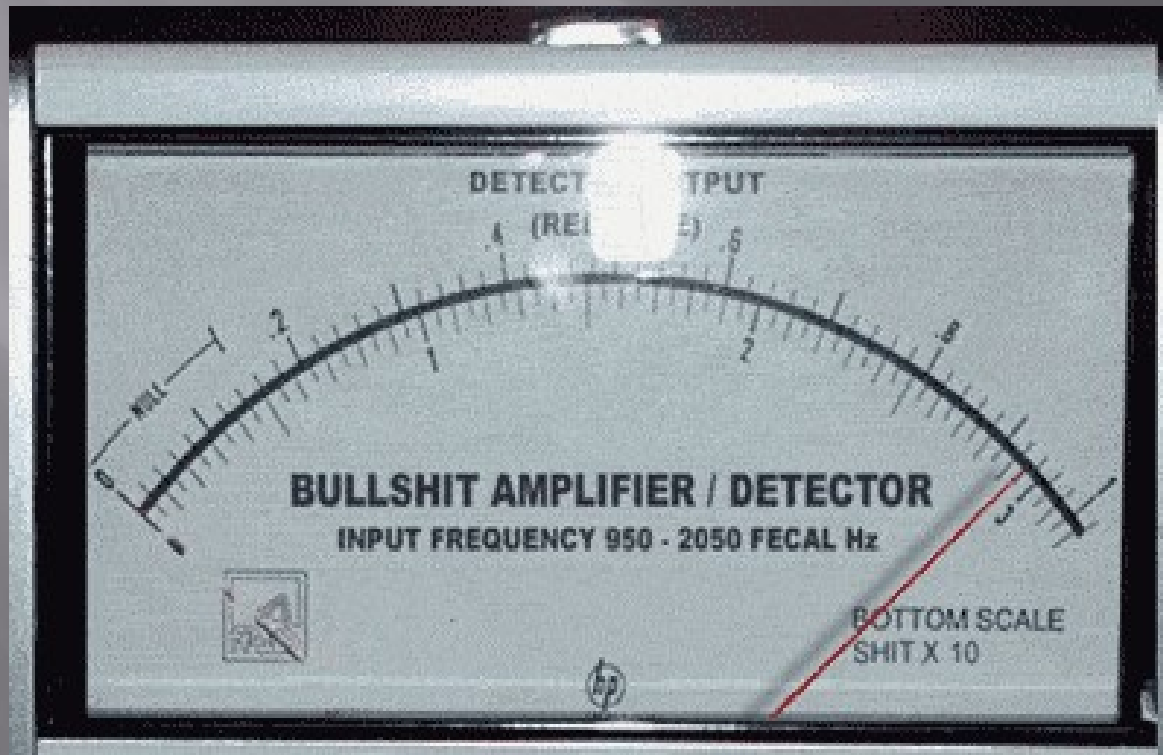
HEARD BUT NO JOY

4J9M

4X4DK

ZC4 (LI?)

More UU, UR, UT



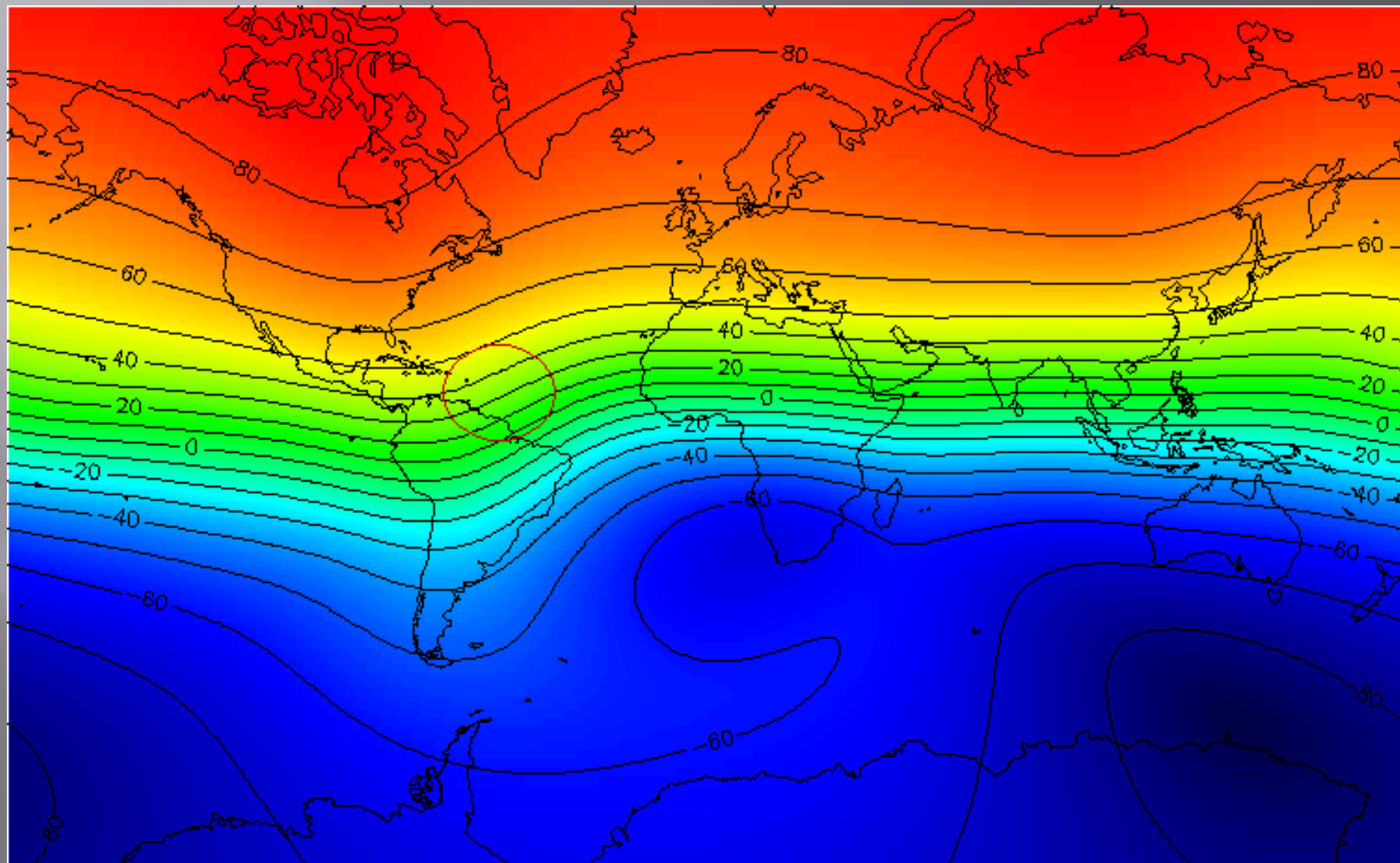
“Firsts” to EU

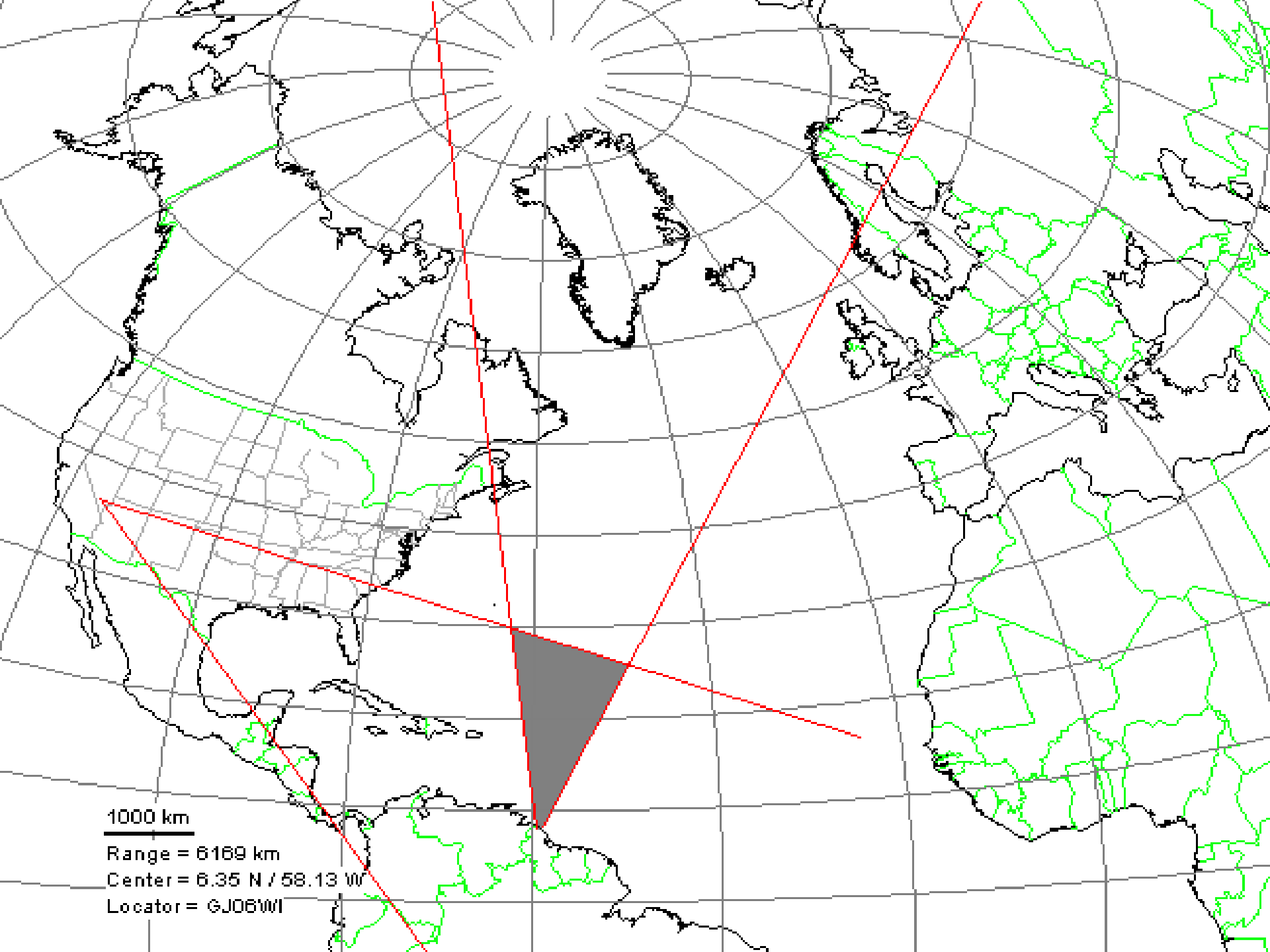
- ▣ OM
- ▣ EI
- ▣ UT (?)
- ▣ HA (presumption)
- ▣ E7 (presumption)
- ▣ Z3 (?)
- ▣ OK
- ▣ ES (?)

Paths for 8R1DB

- ▣ Almost all propagation was skewed.
- ▣ W6/7 & VE7 worked QTF TF & OH
- ▣ Eastern EU worked facing OX & TF
- ▣ Tested paths during operations- direct heading virtually always lost propagation
- ▣ K3TKJ & 8R1DB antenna directional tests: result BIG hotspot somewhere in the Central Atlantic

Hypothesis on skew





1000 km

Range = 6169 km

Center = 6.35 N / 58.13 W

Locator = GJ06WJ

Kaieteur Falls



Kaieteur Rainforest Trail



Kaieteur Falls



Kaieteur Falls



Kaieteur Gorge



W3CMP/Kaieteur



Top of Kaieteur



Kaieteur Falls 741 Foot Drop



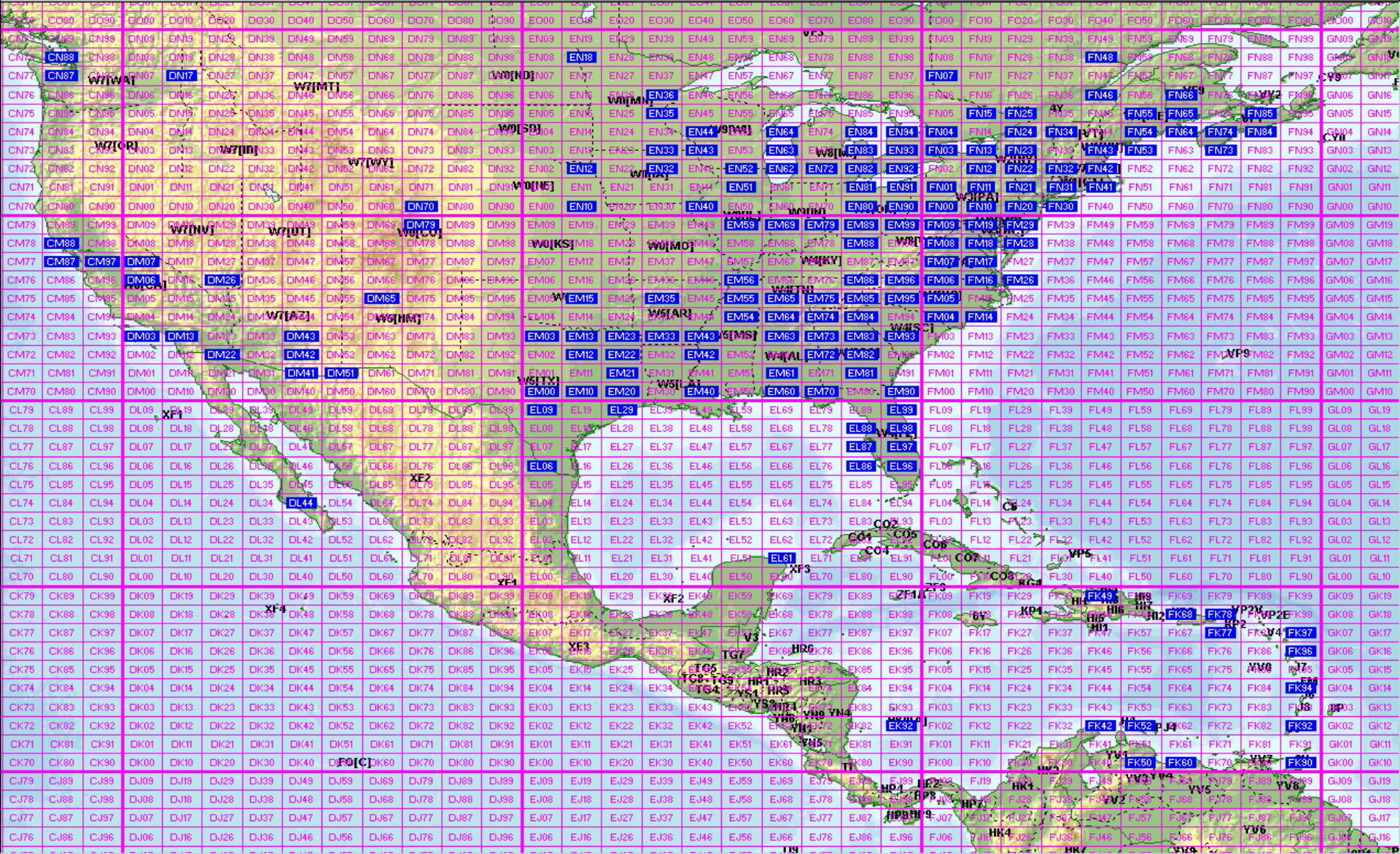
8RITO







NORTH AND SOUTH AMERICAN GRIDS WORKED BY 8R1T0



K4RX/Kaieteur Falls



Orinduik Falls



Orinduik Falls



AC4TO/Orinduik Falls-NOT to be Cofused with Michael Phelps



Amerindian Structure



Private (PAY) Privy-Georgetown



Georgetown Street Vendor



Guyana National Library



St. George's Cathedral 1892



St. George's Cathedral 1892



Between 1810 - 1811 the first St. George's was built on Company Path, the site presently occupied by the St. George's High School. Over the next few years there were two other cathedrals constructed until the fourth and present structure was erected to accommodate a congregation of some 1500 - 1800 worshippers.

Sir Arthur Blomfield, an English architect of Montague Square, London designed the current structure in 1886. Upon acceptance, the engineers utilised local hardwoods and English oak in the construction of the building.

St. George's Cathedral

With the compliments of



Pointed arches, flying buttresses, vaulted ceilings and traceried windows are a few of the noteworthy architectural details of this Gothic edifice. The interior of the Cathedral is designed in the shape of a Latin Cross, fused with elements of Elizabethan architecture. The Cathedral was opened on August 24, 1892 partially completed, and subsequently consecrated on November 8, 1894 by Bishop W. P. Swaby.

In 2000 this magnificent edifice was declared a National Monument by the Government of Guyana.

St. George's Cathedral



Georgetown City Hall



St. Andrew's Kirk 1748

St. Andrew's Kirk holds the distinction of being 'the oldest ecclesiastical building in the city'. It stands on the site believed to be the spot where the Brandwagt or signal post was erected circa 1746 or 1748. It is also believed that an Indian trading post was located somewhere on the site where the Brandwagt was erected, the former being the first sign of European civilization in the country.

The first foundation of the building intended for a Dutch Reformed Church was laid by Governor Henry William Bentinck on August 12, 1811. Services were held as early as 1812 though the structure was incomplete. By 1813, the Dutch experienced financial difficulties and the unfinished building was advertised for sale. It was sold at Execution Sale on May 4, 1813 and purchased by a few members of the Dutch Vestry.

Two years later, the Scottish community offered to meet the expenses to complete the church and to enjoy half the right and title to the building.

St. Andrew's Kirk

With the compliments of



&



This was accepted by the Court of Policy and on September 27, 1818, the building was opened as St. Andrew's Church. Reverend Archibald Browne, the first Scottish Minister and the Dutch Predicant, Reverend B. Floors officiated before a crowded congregation.

St. Andrew's enjoyed a peaceful existence despite being in danger of destruction by fire in 1828. Over the years, the architecture of St. Andrew's has undergone numerous changes. The original building was smaller than present and it was planned along the lines of the Romanesque Revival Architectural Style (called Norman in England) rather than the Gothic Revival Architecture we now see.

For almost 200 years, St. Andrew's Kirk, with its high steeple and quaint double angled roof, has graced the landscape of the city. Its endearing value to the cultural landscape of the city has been identified, as it is one of the primary structures proposed for Georgetown's nomination to the UNESCO World Heritage List.

Saint Andrew Kirk 1748



Georgetown Street Market



Atypical Market Stand Holder



Georgetown street Market



Abandoned Telecom Antennas



Magistrate's Court Touting Activities Prohibited



Downtown Georgetown



Georgetown Neighborhood



Demarara River



Antenna Take-down









8R1DB/b setup







8R1DB/b

- ▣ 40 watts to HO Loop
- ▣ GJ06wi
- ▣ 50.011
- ▣ Intermittent until QRM problem is solved. This will likely entail moving the beacon to a different location

6 Meter Beacon Project, Inc.

- ▣ Devoted to establishing beacons in areas of the world in need of propagation indicators at 50 MHz.
- ▣ 501(c)(3) charitable corporation
- ▣ New goals- establish a searchable database online to correlate propagation data (spots) with contemporaneous solar & terrestrial data to promote better understanding of 6 meter propagation characteristics

