

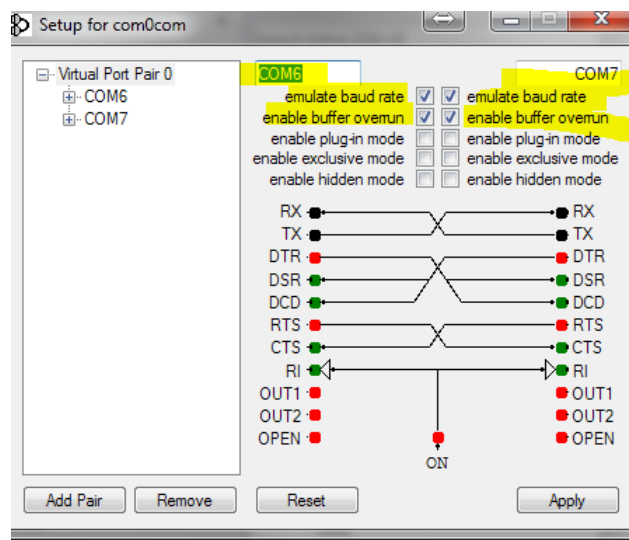
Com0Com settings

From: **Bryan Dunn** (bdunn246@gmail.com) This sender is in your [contact list](#).

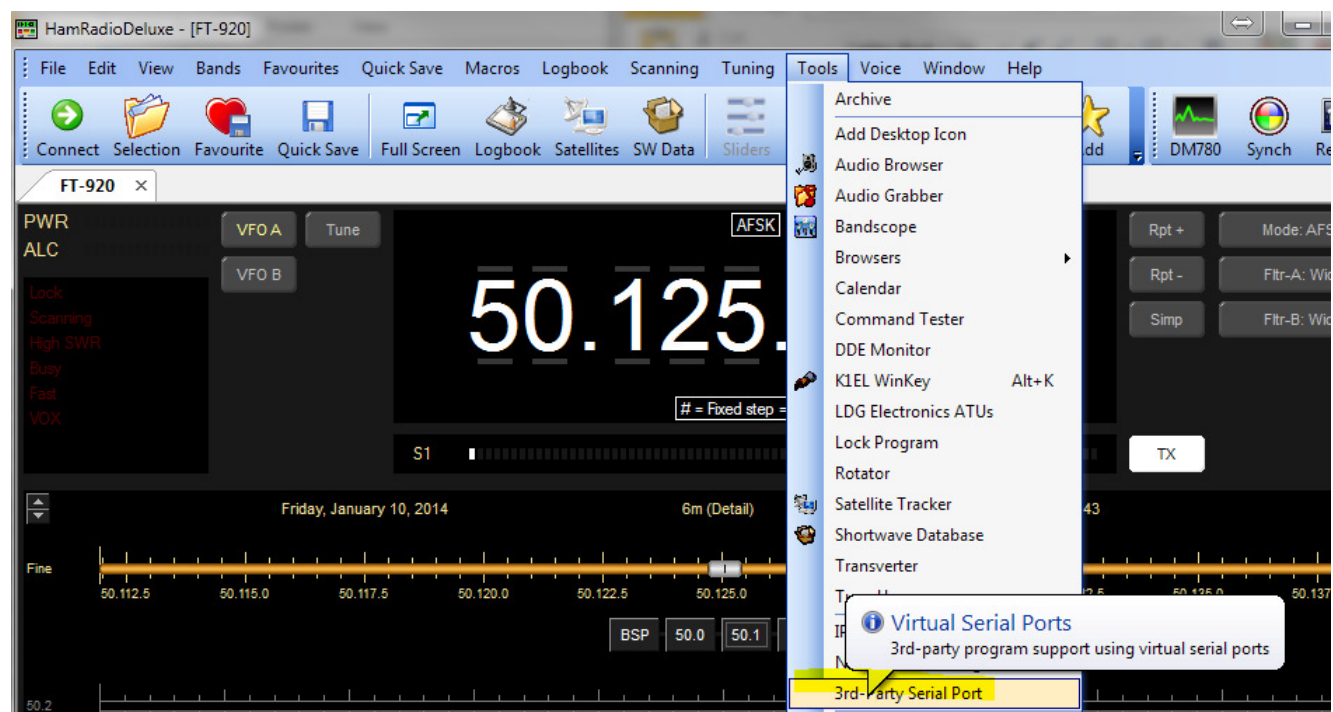
Sent: Fri 1/10/14 8:12 PM

To: g6yzc@msn.com

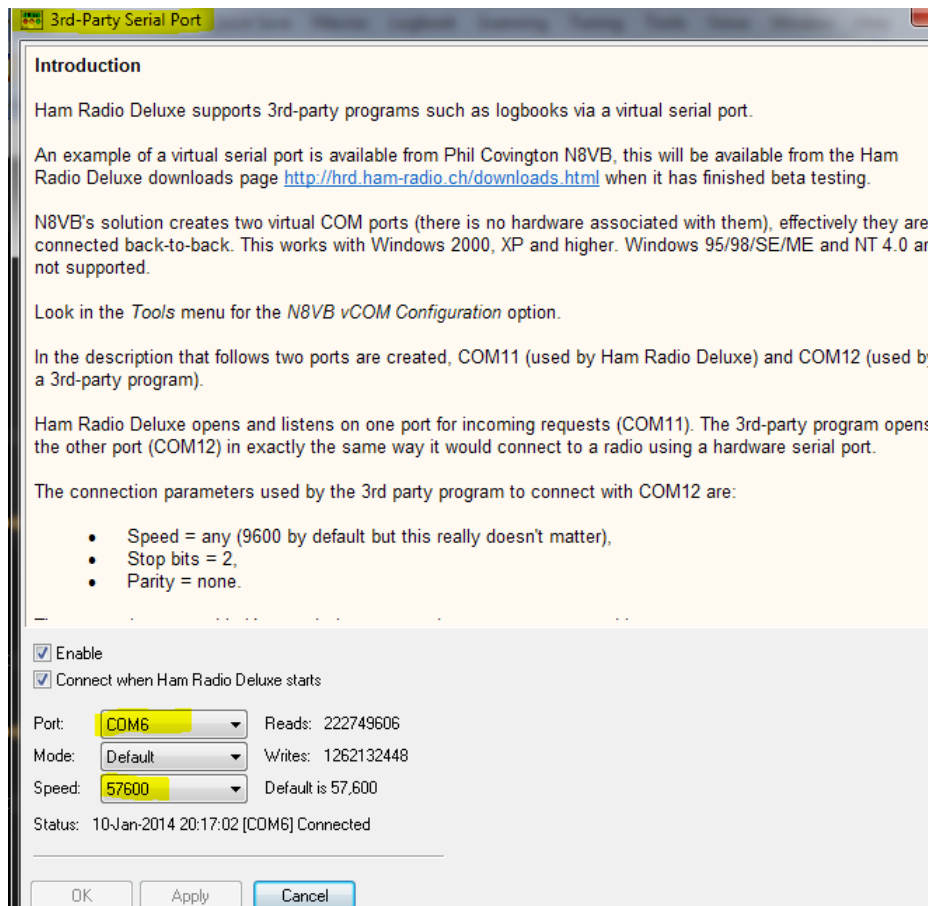
Setup Com0Com for a null modem connection between com6 and com7.



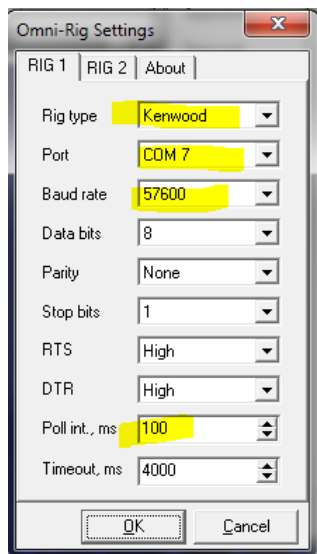
Open the 3rd party serial port feature in HRD.



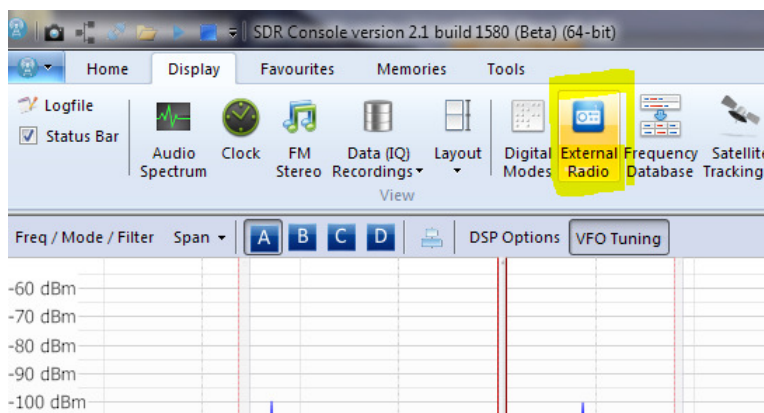
Enable Configure the HRD 3rd party serial port on com6.



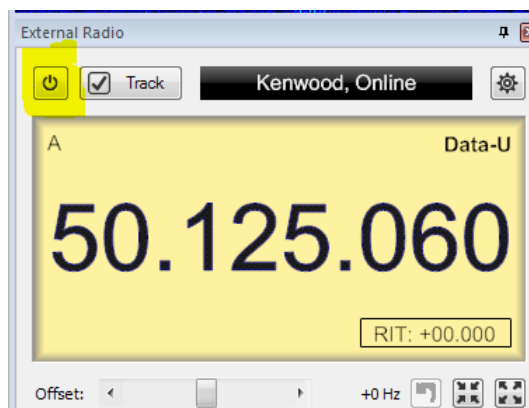
In OmniRig setup, connect it to Com7 and configure for 57600 8N1, Kenwood.



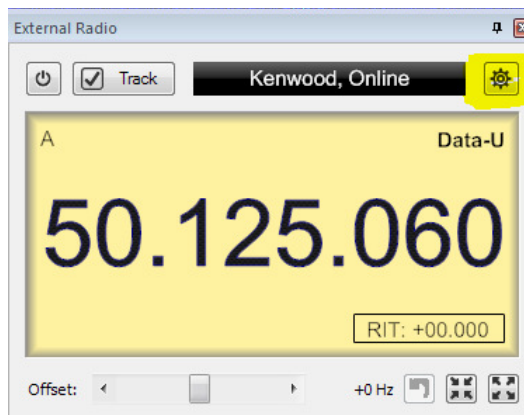
In SDR Console, enable the external radio feature:



Turn it "on". You have to turn it on before it will let you configure it.



Open the settings:



Confirm Rig 1- Kenwood is selected.

